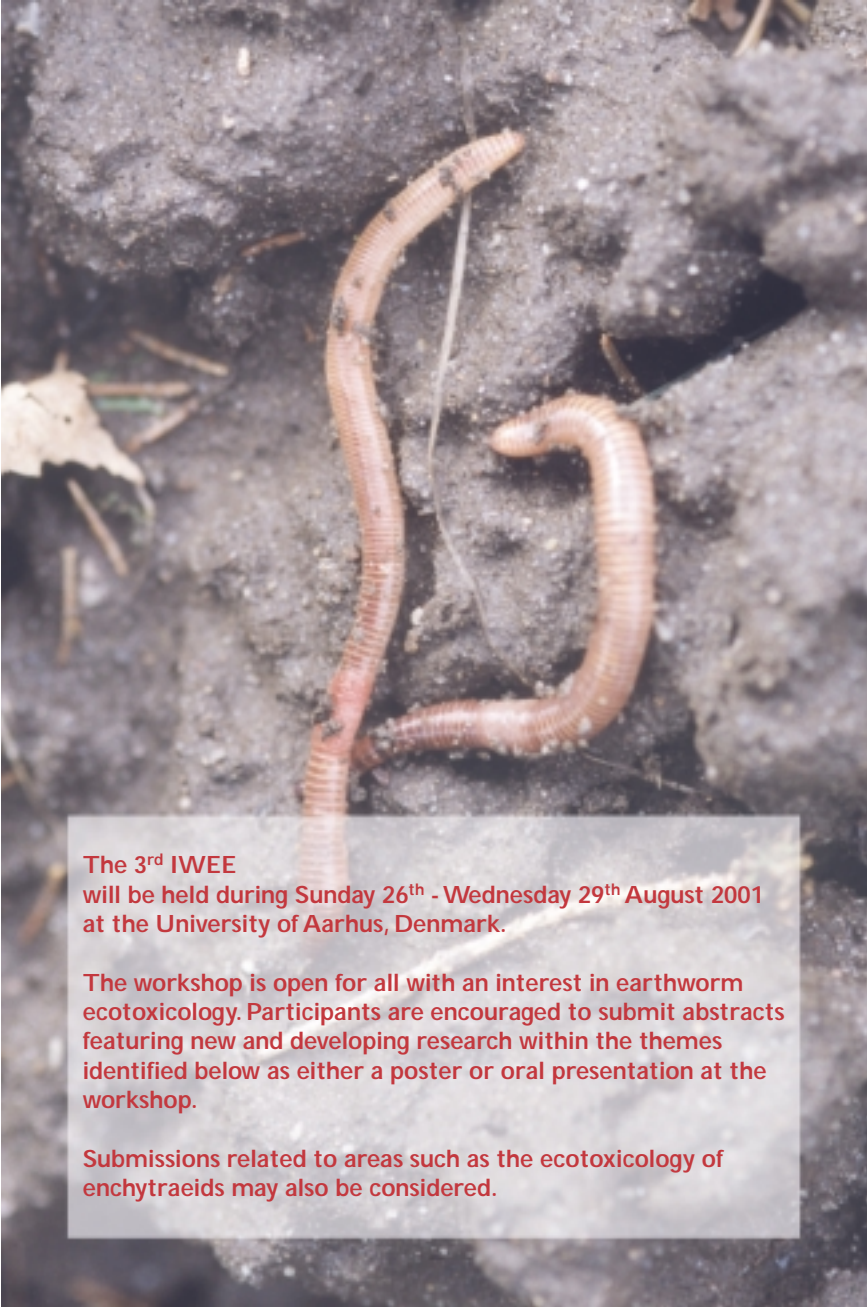


3rd International Workshop

on Earthworm Ecotoxicology (IWEE)



The 3rd IWEE will be held during Sunday 26th - Wednesday 29th August 2001 at the University of Aarhus, Denmark.

The workshop is open for all with an interest in earthworm ecotoxicology. Participants are encouraged to submit abstracts featuring new and developing research within the themes identified below as either a poster or oral presentation at the workshop.

Submissions related to areas such as the ecotoxicology of enchytraeids may also be considered.

We hope to build on the success of the last meeting held in Amsterdam in 1997. It is time to consider the scientific advances and developments since that meeting, for example the significant molecular successes through to ongoing work looking at life-history traits and evolutionary constraints. This, the third **IWEE** meeting will focus more on these and other science issues than on procedures for pesticide registration.

Proceedings from the workshop will be published either as a book or special journal issue. Participants wishing to submit a manuscript should indicate this on the attached abstract form and submit a version to the scientific committee in advance of, or during the meeting to speed up the refereeing and publishing process. The proceedings will, as with previous workshops, include the recommendations of the workshop for future research and initiatives.

The workshop will address four main themes of earthworm ecotoxicology:

- Biochemical and physiological effects
- Individual and population effects
- Field and semi-field studies
- Soil quality assessment and risk assessment (including contaminated land)

Selected and invited keynote speakers, representing the state of the art and the newest scientific advances will address each theme during plenum sessions. Each session theme will have additional poster sessions and associated workshops allowing discussion in smaller groups. The rapporteur of each discussion group will report their findings back to all participants during special plenum sessions. The breakout discussion group themes will be chosen on the basis of the submitted abstracts and the interests of participants but will also reflect the special themes. Suggestions for discussion topics are welcome in advance, and should be sent to the local organisers as soon as possible.

The members of the Scientific committee are:

Martin Holmstrup (Denmark)
Janeck J. Scott-Fordsmand (Denmark)
Ole Mather-Christensen (Denmark)
Kees van Gestel (The Netherlands)
Jason Weeks (United Kingdom)
Christine Kula (Germany),
Vaclav Pizl (Czech Republic)
Agnes Renoux (Canada)

The members of the local organising committee are:

Martin Holmstrup, DMU, Denmark (mho@dmu.dk)
Janeck J. Scott-Fordsmand, DMU, Denmark (jsf@dmu.dk)
Ole Mather-Christensen, University of Aarhus, Denmark (ole.m.christensen@biology.au.dk)
Lene Birksø Bødskov, DMU, Denmark (lbb@dmu.dk).

Abstracts must include details of the presenting author, affiliation, maximum of 300 words, indicate the preferred theme (1-4) and whether an oral or poster presentation is preferred. Completed abstracts should be emailed to lbb@dmu.dk as soon as possible and not later than February 28th, 2001. Receipt will be acknowledged. Areas outside the themes listed may also be considered.

GENERAL INFORMATION

CORRESPONDENCE

Scientific Secretariat:

Martin Holmstrup/ Janeck J. Scott-Fordsmand
Department of Terrestrial Ecology
National Environmental Research Institute
Vejlsovej 25, PO Box 314
DK-8600 Silkeborg
Denmark

Phone: +45 8920 1400
Fax: +45 8920 1414
E-mail: mho@dmu.dk

For updated information visit our web site: www.dmu.dk → "Neri Facts"
→ "Neri Departments" → "Terrestrial Ecology" → "Research"
→ "Soil and Fauna Ecotoxicology"

Symposium Secretariat:

Registration forms, hotel reservations and all correspondence concerning registration and accommodation (payment, cancellation, changes, social programme etc.) should be sent to:

IWEE

Århus Convention
City Hall
DK-8000 Århus C
Denmark

Phone: +45 8940 6710
Fax: +45 8612 0807
E-mail: iwee@aar-conv.dk

VENUE

The symposium will take place at:

University of Aarhus
Department of Mathematics
Building 530, Ny Munkegade
DK-8000 Århus C
Denmark

PRACTICAL INFORMATION

Language:

English is the official language of this symposium and no simultaneous translation will be provided.

Liability and insurance:

The organisers take no responsibility for injury or damage involving persons or property during the symposium. Participants are advised to take out their own personal insurance.

ÅRHUS CITY

Århus is the second largest city in Denmark with 286,000 inhabitants. The history of Århus goes back more than a thousand years and it is one of the true Viking towns. It has an outstanding location, encircled by woods, and bordered by beaches the city lies in a shielded spot inviting you to enjoy its extensive attractions. Best known and treasured is the open-air museum "The Old Town" with more than 65 half-timbered houses from every part of Denmark. A few miles from the summer residence of Queen Margrethe II, Marselisborg Palace, is another attraction, Moesgård Museum, the museum of prehistory.

Århus is an educational and cultural centre and the very soul of the city is a charming blend of provincial town and big city, which will make you feel at home and welcome.

TRAVEL

By plane:

Århus Airport is connected with Copenhagen International Airport/Kastrup with 13 daily departures on weekdays and 7 departures on Saturdays and 6 on Sundays. The flight takes 35 minutes. In Copenhagen, a free transit bus links the international and domestic airport terminals.

Århus Airport, located 40 km north of the city, offers direct international flight connections to Oslo, Stockholm, Gothenburg, and Heathrow.

Billund Airport, located 100 km south of the city, has direct international flight connections to Amsterdam, Brussels, Paris, Frankfurt, London/Gatwick, Manchester, Riga, Oslo, Bergen, Stockholm, Gothenburg, The Faroe Islands, Nice, Palanga, and Kaunas.

There is a bus service to Århus City from both airports. The travel time from Århus Airport to Århus is approx. 50 minutes (one way ticket approx. DKK 50) and from Billund Airport to Århus approx. 1½ hours (one way ticket approx. DKK 120). Tickets are sold on the bus. Individual taxi and limousines services are available but should be booked with your flight ticket.

For further updated information go to: www.aarhus-convention.dk → "getting to Aarhus" → "transport"

By train:

A train station serves Århus with hourly service to and from Copenhagen (3 hours) and several daily connections to Sweden, Germany, and the rest of Europe.

By ferry:

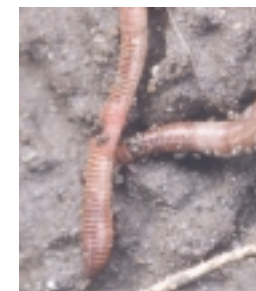
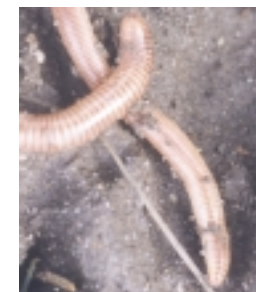
Århus Harbour has ferry and hydrofoil connections to Copenhagen via Kalundborg and Sjællands Odde. There is a bus service from Sjællands Odde to Høje Tåstrup / Copenhagen and vice versa. From Scandinavian countries you can go by ferry to Frederikshavn or Grenå and from there by bus or train to Århus.

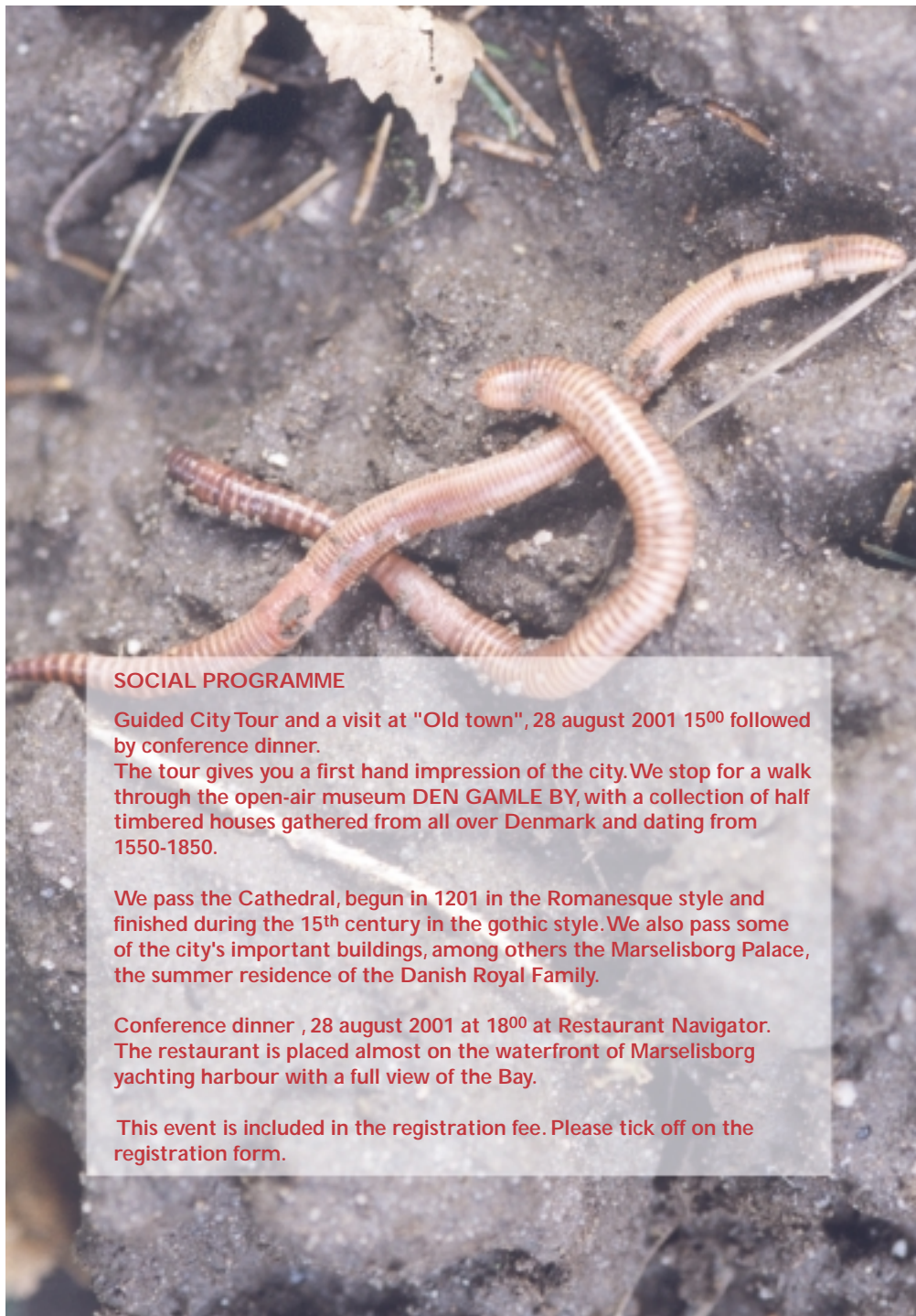
By car:

A freeway links Århus with Germany and thereby most European cities. Århus is a 4½ hours drive from Hamburg. If you come to Århus by car it is possible to park at the university.

Local transport:

Århus has a well-established public bus system. You board the bus by the rear door. It is possible for participants to order a free multi-ride ticket on the enclosed registration form. Taxis are metered and most credit cards are generally accepted. Tax and tip are included in the meter price.





SOCIAL PROGRAMME

Guided City Tour and a visit at "Old town", 28 august 2001 15⁰⁰ followed by conference dinner.

The tour gives you a first hand impression of the city. We stop for a walk through the open-air museum DEN GAMLE BY, with a collection of half timbered houses gathered from all over Denmark and dating from 1550-1850.

We pass the Cathedral, begun in 1201 in the Romanesque style and finished during the 15th century in the gothic style. We also pass some of the city's important buildings, among others the Marselisborg Palace, the summer residence of the Danish Royal Family.

Conference dinner , 28 august 2001 at 18⁰⁰ at Restaurant Navigator. The restaurant is placed almost on the waterfront of Marselisborg yachting harbour with a full view of the Bay.

This event is included in the registration fee. Please tick off on the registration form.

REGISTRATION AND ACCOMMODATION

All participants must submit one completed registration form per person. Please fill in the enclosed registration form and return it with relevant payment to:

IWEE c/o Århus Convention City Hall DK-8000 Århus C Denmark Fax: +45 8612 0807 E-mail: iwee@aar-conv.dk	Registration fees in DKK:		
		Paid before 1 July 2001	Paid after 1 July 2001
	Participant	DKK 2300	DKK 2600

On condition that we receive external support for the workshop there will be low rate fees for students etc.

The registration fees for all participants include:

- Access to all scientific sessions
- Lunches including get-together
- Coffee and tea during breaks
- City sight-seeing Tour followed by conference Dinner at Navigator, 28 August 2001*
- Multi-Ride Bus Ticket*

*Please remember to tick off on the enclosed registration form - you are not automatically registered.

Payment:

All payment should be forwarded in Danish currency (DKK) and can be made by cheque drawn on Den Danske Bank, bank transfer or credit card (Visa, Eurocard, MasterCard, JCB, Diners, Dankort, Maestro and American Express). Please remember to state card number and expiry date on the registration form. All bank charges are on the account of the participant. Please make sure that your name, address, and **IWEE** are clearly stated on all payments and transfer documents.

Cancellation:

Notification of cancellation must be in writing and sent to Århus Convention. By cancellation before 1 July 2001 the registration fee except a cancellation charge of DKK 300 will be refunded. By cancellation after 1 August 2001 there will be no refund.

All refunds will be processed after the conference. Refund claims must include bank address and account number for money transfer.

ACCOMMODATION

Århus Convention has made preliminary room reservations for the workshop participants. Please book your room as presented on the enclosed registration form. Rooms will be booked on "first come, first served". The organisers cannot guarantee accommodation for participants who have not registered in advance. Payment for accommodation directly to the hotel upon departure.

Confirmation of registration:

A receipt of payment and confirmation of accommodation will be sent after the registration form and full payment has been received by Århus Convention. Please bring this receipt to the registration desk. By mid July all participants will have received this confirmation letter.