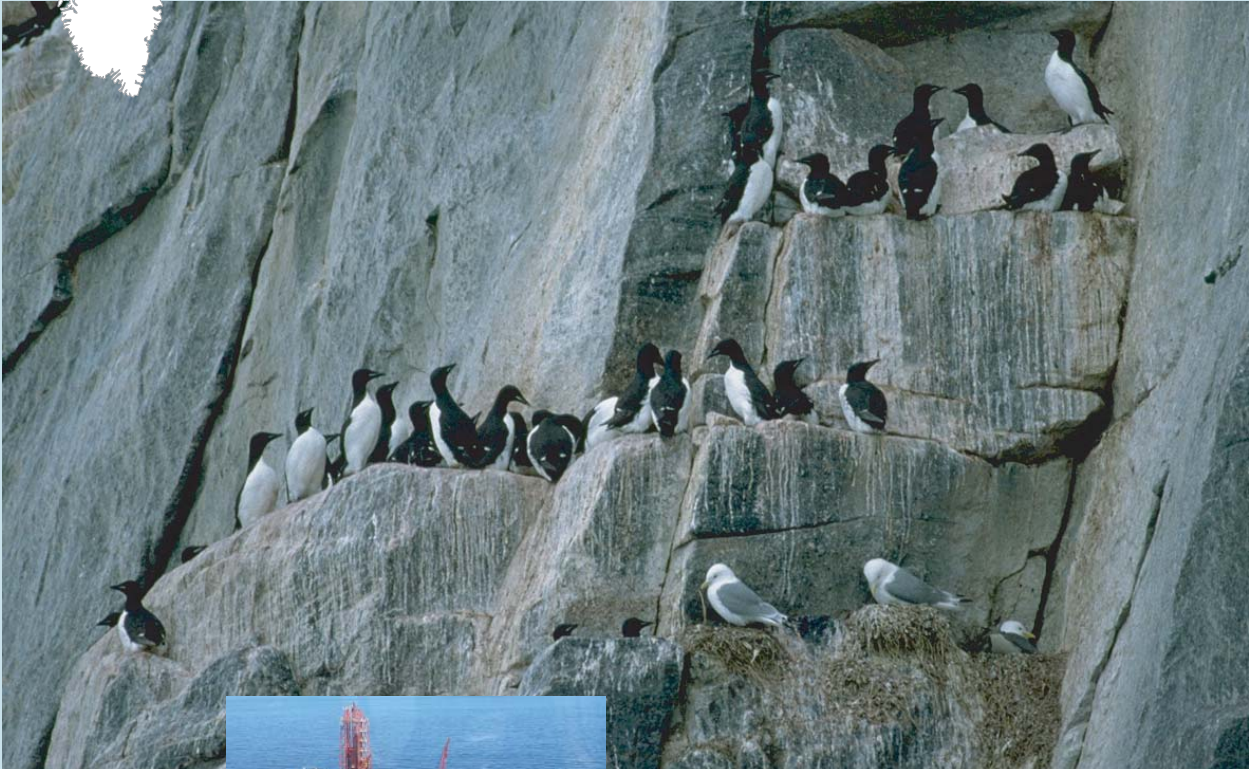




# Environmental **oil spill** sensitivity atlas of West Greenland



The environmental oil spill sensitivity atlas covering West Greenland provides an overview of coastlines and offshore waters particularly sensitive to oil spills. The atlas enables oil companies and authorities to ensure incorporation of the best available environmental information. The atlas is a tool for oil spill preparedness and during the planning of oil activities. The atlas is available free of charge for the oil industry. A CD with the atlas is inserted on the last page in this binder.

The atlas provides an overview of such aspects as the occurrence of wildlife, human resource use (fishing and hunting) and archaeological sites that are particularly sensitive to oil spills. Furthermore it contains information regarding the physical environment – coastal types, oceanography – logistics and oil spill response methods.

The environmental oil spill sensitivity atlas has been prepared to provide oil spill response planners and responders with tools to identify resources at risk, establish protection priorities and identify appropriate response and clean-up strategies. The atlas enables oil companies and authorities to incorporate environmental consideration into exploration and contingency plans.



### The atlas

The information comes from numerous scientific studies and from local knowledge achieved from interviews with local fishermen and hunters in almost all settlements within the mapped region. The coast is divided into segments of app. 50 km length, and each segment is classified according to its overall sensitivity to marine oil spills. The informations are collated on two main sets of digital charts.

### Shoreline sensitivity maps

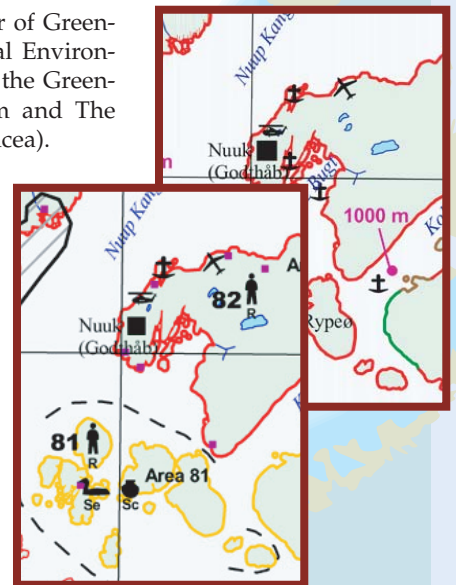
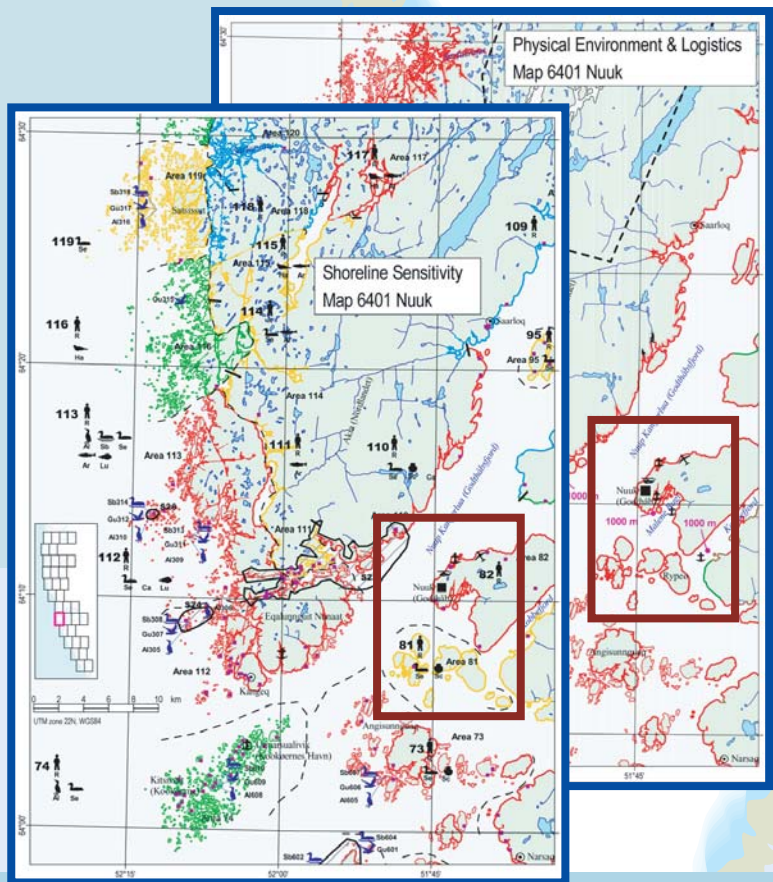
34 shoreline sensitivity maps shows index values for coastal sensitivity and symbols for the significant elements of the classification (hunting and fishing areas, fish, birds, marine mammals and archaeological sites). Each map has a description of biological resources and human use of the area.

### Physical environment and logistic maps

34 physical environment and logistic maps shows coast types, logistics and proposed methods to oil spill response for each area.

Besides the atlas covering the region 62°-68°N two more atlases will be issued spring 2004. These cover regions further south and north, and in total the atlases include the coasts and offshore waters from Cape Farewell to southern Upernavik (60°-72°N).

The atlases are developed collaboratively by a number of Greenlandic and Danish institutions headed by the National Environmental Research Institute. The atlases are financed by the Greenland Home Rule, Bureau of Minerals and Petroleum and The Danish Cooperation for Environment in the Arctic (Dancea).



The atlases are available on the Internet  
<http://environmental-atlas.dmu.dk>

Further information please contact: Anders Mosbech



National Environmental Research Institute, Department of Arctic Environment  
Post Box 358, DK-4000 Roskilde., Tel. +45 4630 1934, Fax +45 4630 1214, e-mail: [amo@dmu.dk](mailto:amo@dmu.dk)