

VRD GIS-analyser

Oplandsgrænser til vandområder (waterbodies)

Gruppering af vandområder efter typologi

Kvælstofbelastning af vandområder

Anvendt software:
ArcEditor 8.3 med Spatial Analyst extension

Oplandsgenerering til et givet punkt

Vandløbstema

Digital Højde Model

Terræn præprocessering:

- "Nedbrænding" af vandløb
- Huludjævning
- Flow-retning
- Flow-akkumulering
- Vandløbsgenerering

Generering af vilkårlige afstrømnings-oplande til vandområder

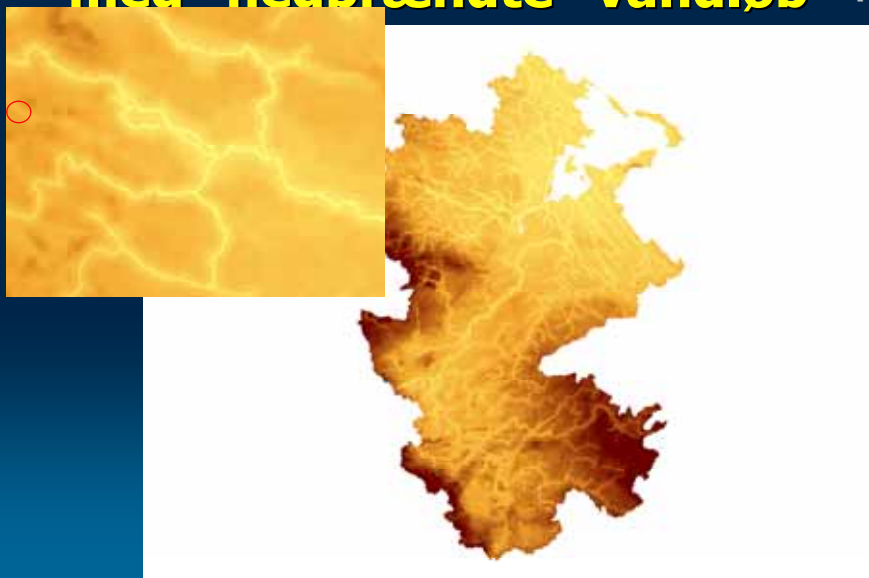
Digital højdemodel 25mx25m med "nedbrændte" vandløb



Fyns Amt

Natur- og Vandmiljøafdelingen

2004 - 01



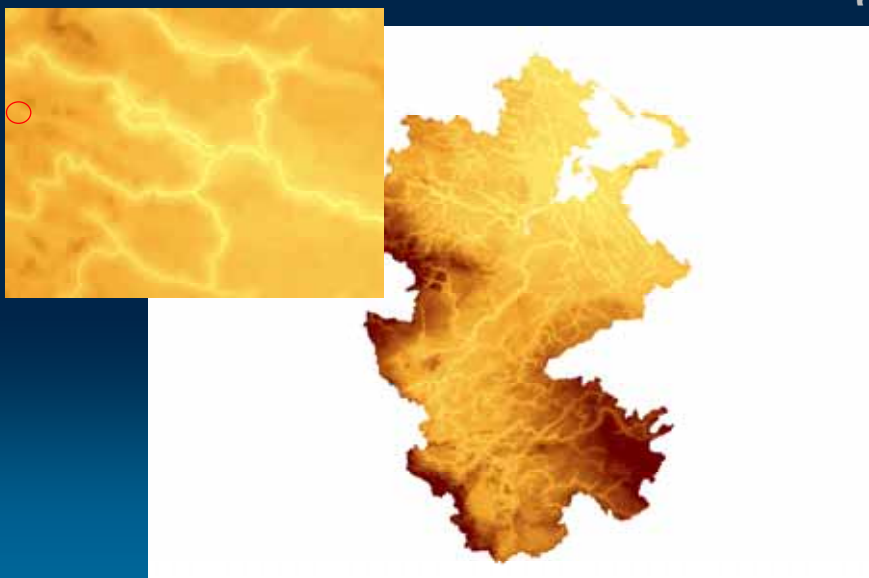
"Hul-udjævning"



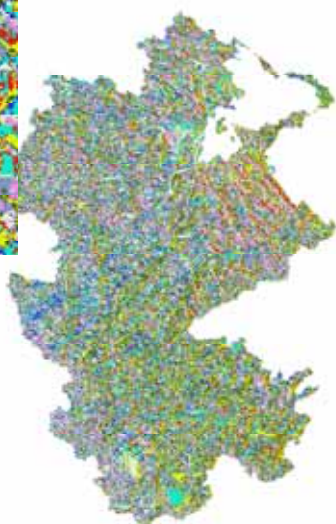
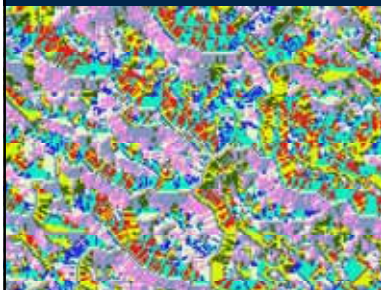
Fyns Amt

Natur- og Vandmiljøafdelingen

2004 - 01



Flow-retning. 8 muligheder.

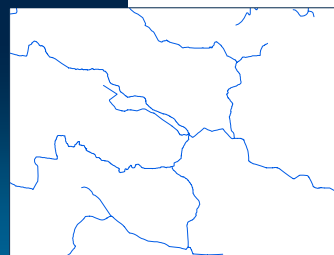


Fyns Amt

Natur- og Vandsmiljøafdelingen

2004 - 01

Vandløbsgenerering "600"



Fyns Amt

Natur- og Vandsmiljøafdelingen

2004 - 01

Oplande til 3 stationer



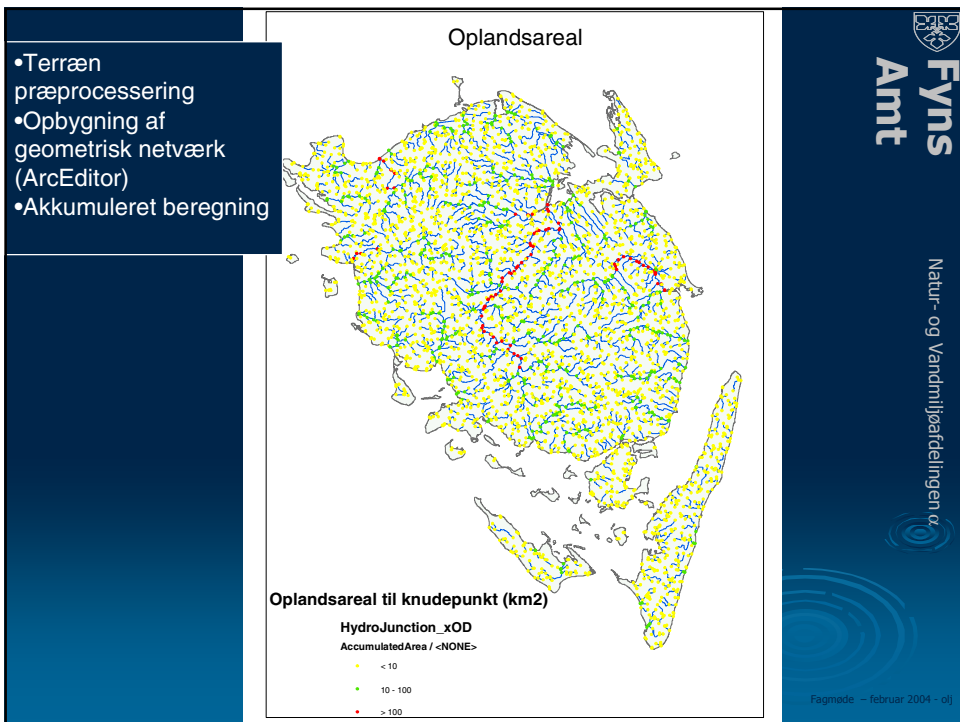
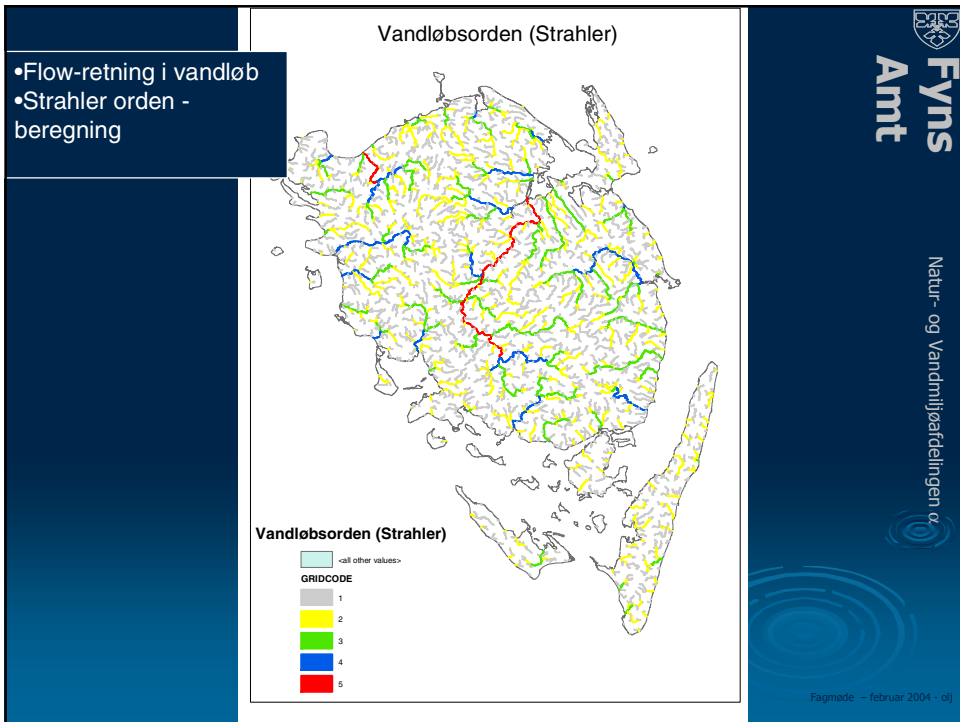
VRD typologi, vandløb

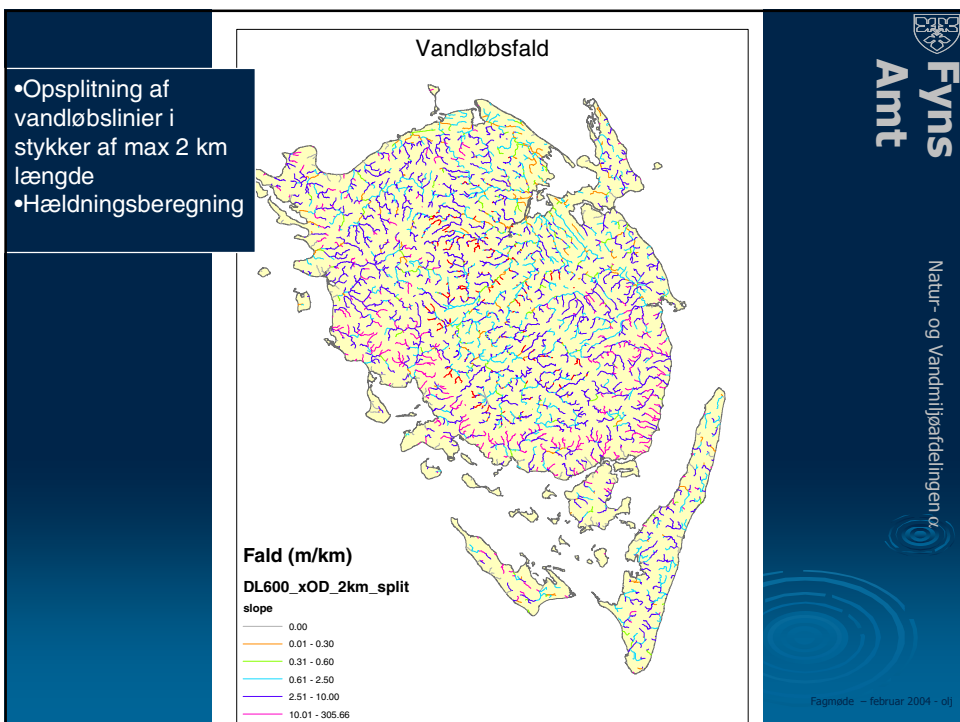
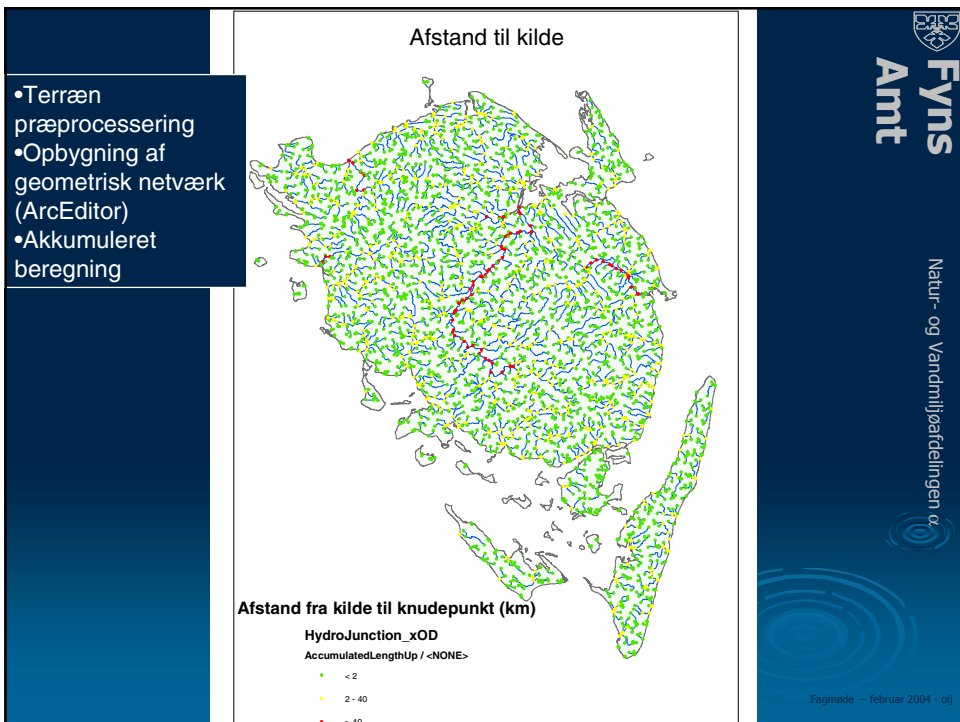
➤ Typologi - gruppering efter naturgivne referenceforhold

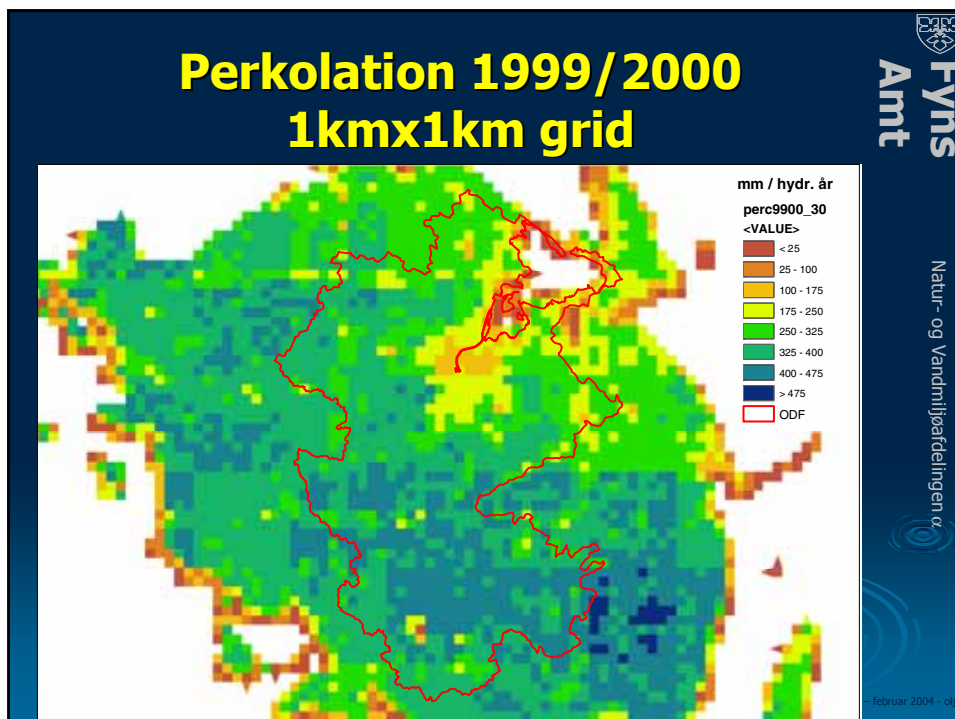
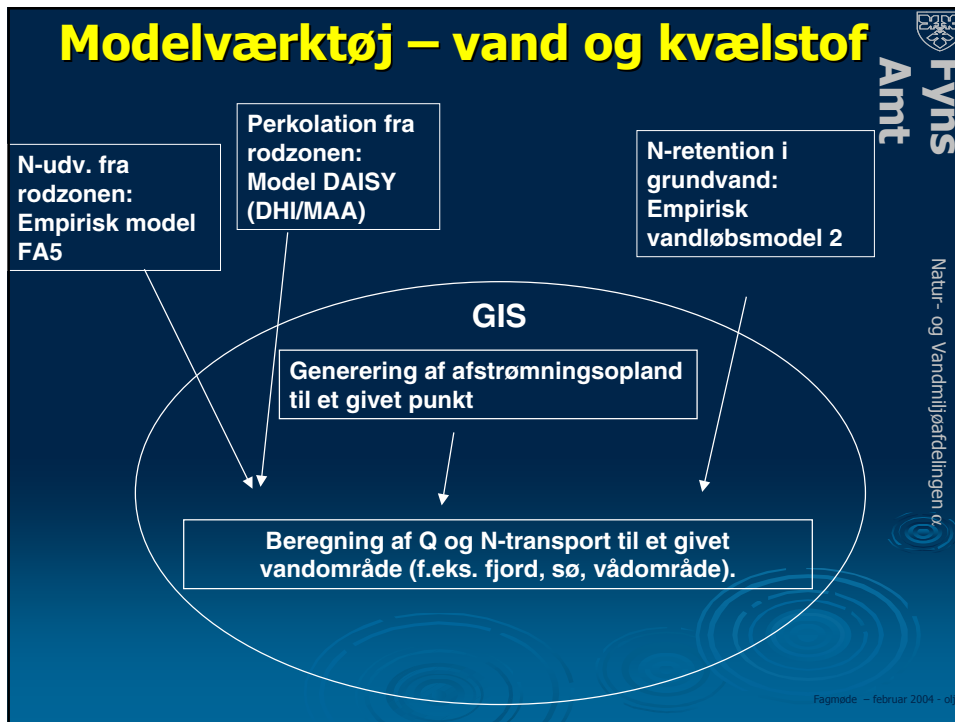
Type	1	2	3
Orden (efter Strahlers system)	1-2	3-4	≥5
Oplandsareal (km ²)	<10	10-100	>100
Bredde (m)	0-2	>2-10	>10
Afstand til kilde (km)	<2	2-40	>40



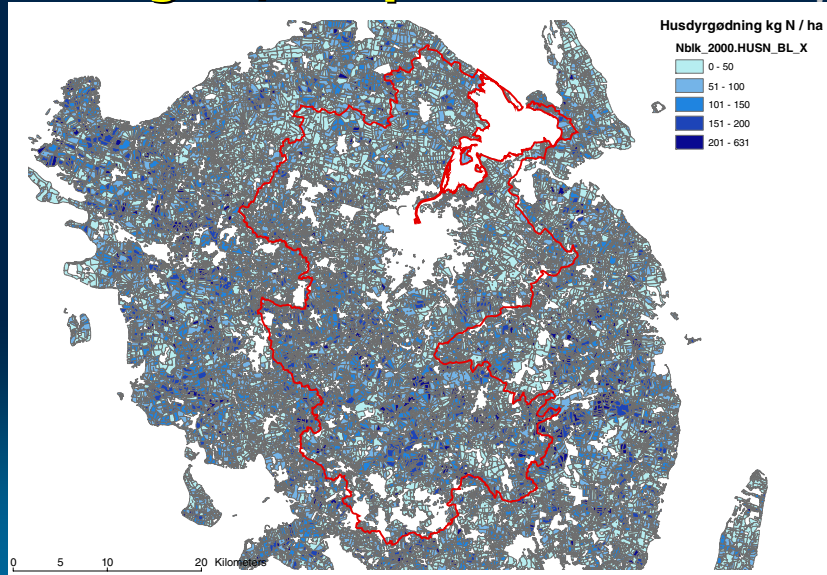
Fald (m/km) <0.3 0.3-0.6 2.5-10 >10





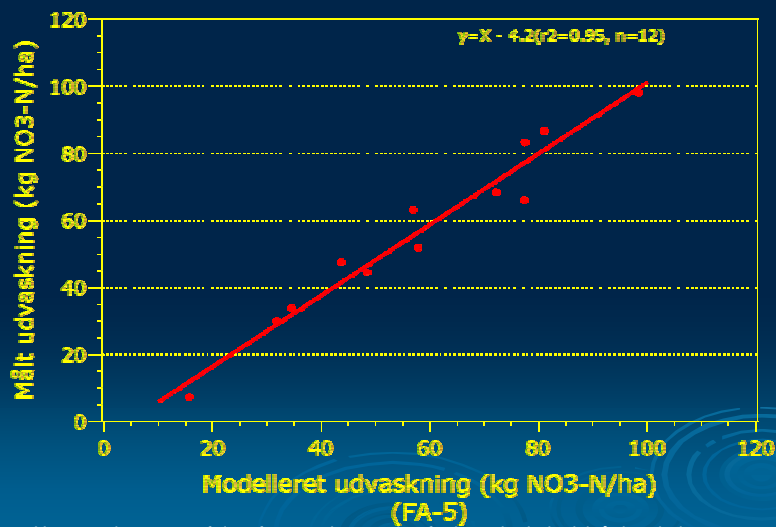


Tilførsel af husdyrgødning Kg N / ha pr. markblok.

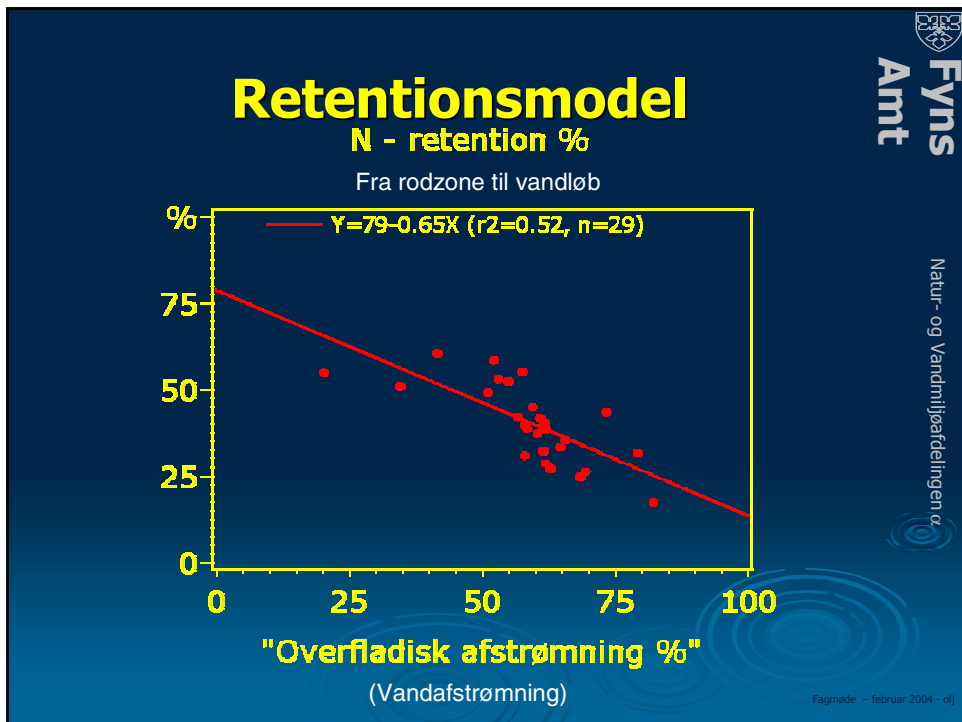
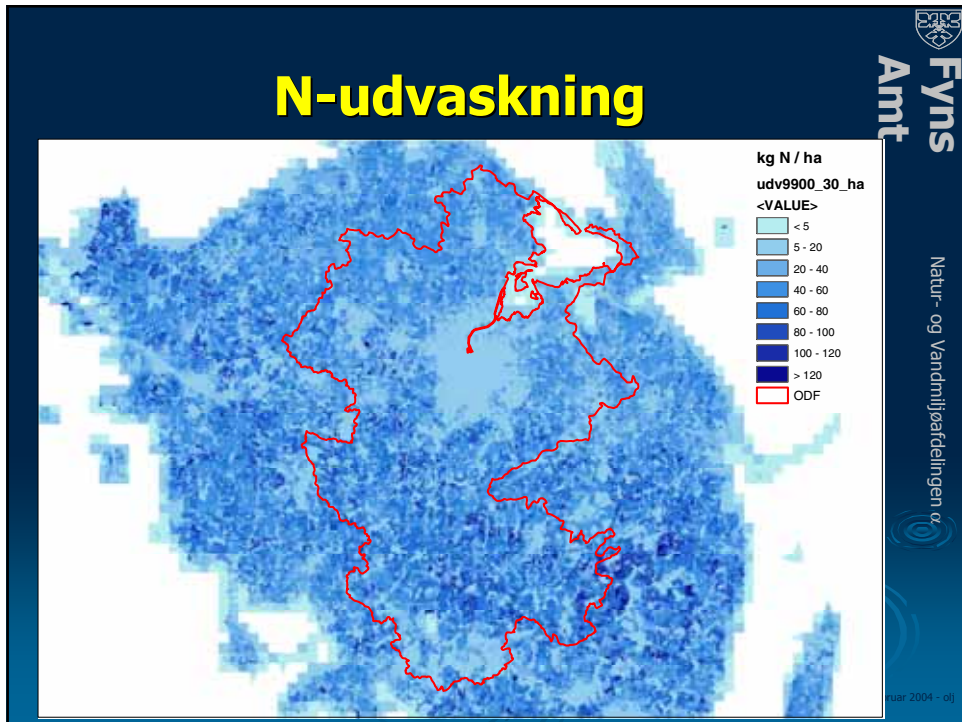


N-udvaskning, model

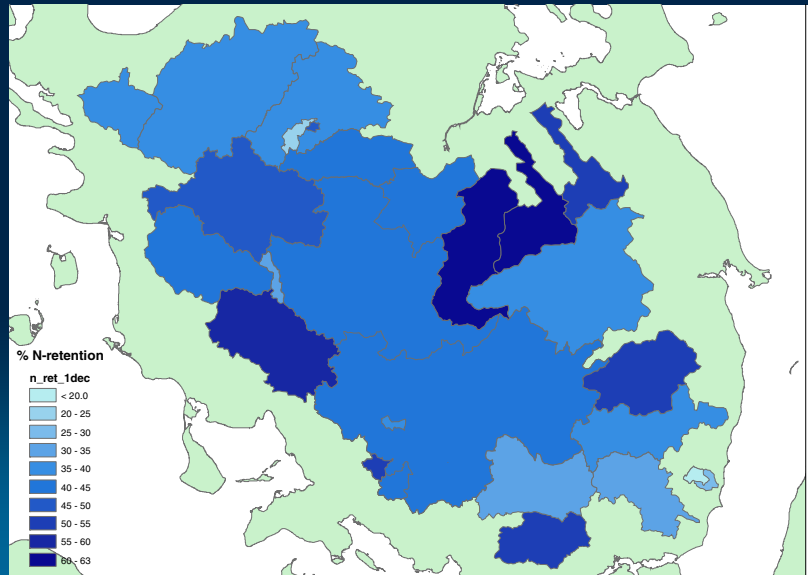
6 stationsmarker, Lillebæk. Model FA-5



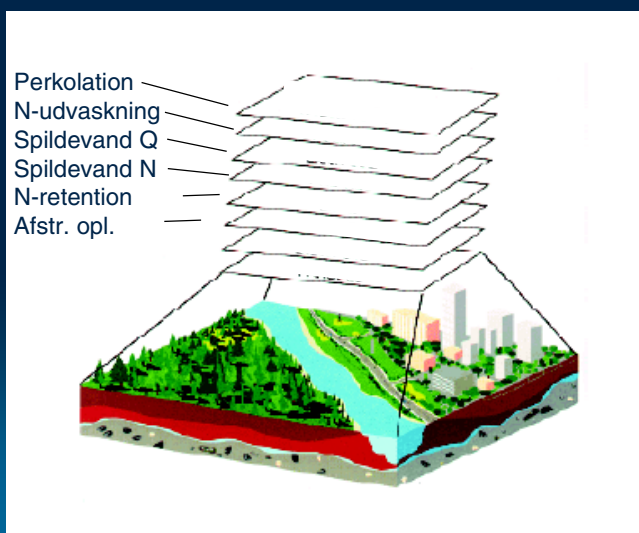
Hvert punkt er gns. af data fra 6 stationsmarker for hvert hydrologisk år i perioden 1990/1991-2001/2002



N-retention (%) i 26 oplande



Inddata-grids



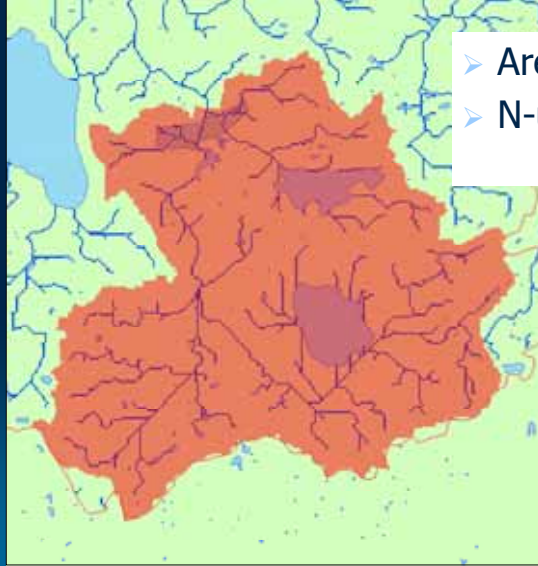
Brahe Trolleborg vådområdeprojekt



Amt

Fyns

Natur- og Vandområdedelingen



- Areal: 1008 ha
- N-udv.: 209,2 t / 46,0 kg/ha

Fagmade – februar 2004 - o/j